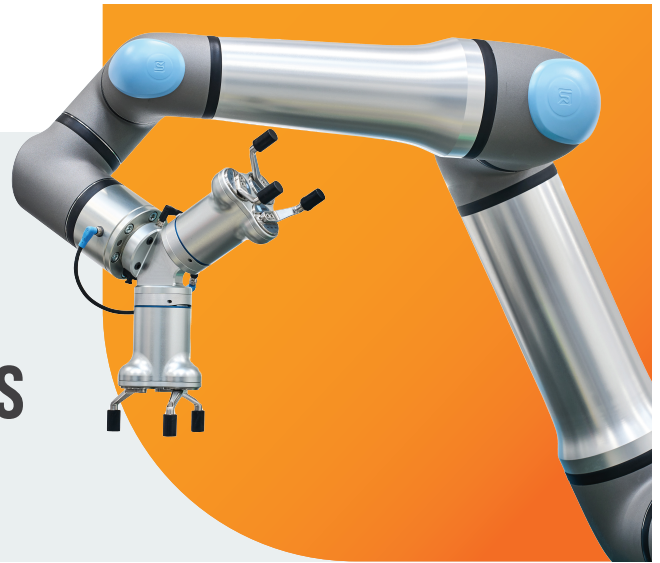




UNIVERSAL ROBOTS

# AUTOMATE YOUR TASKS AND INCREASE EFFICIENCY WITH COLLABORATIVE ROBOTS

Automation for Anyone. Anywhere.



## WHAT ARE COBOTS?



Cobots are lightweight, collaborative robotic arms designed to work safely alongside people to perform tasks that may be too dangerous, tedious, or strenuous for them to accomplish on their own. With advanced safety features, cobots are much safer than traditional robots, where most applications require little-to-no guarding or other safety devices.

## WHERE DO COBOTS MAKE A DIFFERENCE?

### Applications

Cobots from Universal Robots are bringing flexible automation to manufacturers of all sizes. Cobots can help you achieve greater productivity with practically any processing task.

- Palletizing
- Machine tending
- Finishing
- Welding
- Material handling
- Quality inspection
- Assembly
- Material removal
- Dispensing

## WHY AUTOMATE?

- 1 Future-Proof Your Business**  
Collaborative robots allow you to switch between applications or adapt to fluctuating order demand whenever you need.
- 2 Protect and Upskill Your Workers**  
Cobots can fill the gaps in your workforce and work with your employees to perform dull, dirty, and dangerous tasks.
- 3 Become More Sustainable**  
UR cobots require significantly less power than traditional robots and lead to less production waste.





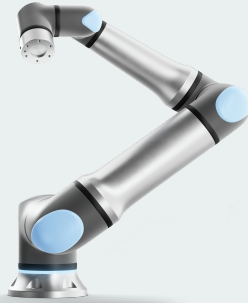
# COLLABORATIVE ROBOT RANGE

## Large Payload

### UR30 NEW

Heavy payload, compact cobot

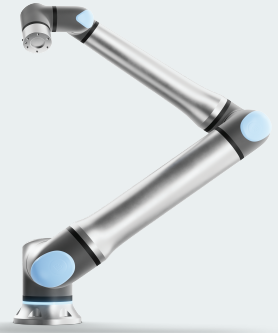
Reach: 1300 mm / 51.2 in  
Payload: 30 kg / 66.13 lbs  
Footprint: Ø 245 mm  
Weight: 63.5 kg / 139.9 lbs



### UR20

Heavy payload, fastest cobot

Reach: 1750 mm / 68.9 in  
Payload: 20 kg / 44.1 lbs  
Footprint: Ø 245 mm  
Weight: 64 kg / 141.1 lbs

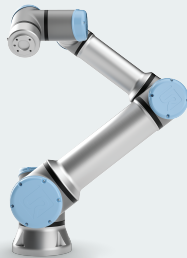


## Medium Payload

### UR16e

Medium payload, compact cobot

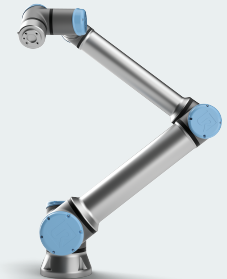
Reach: 900 mm / 35.4 in  
Payload: 16 kg / 35.3 lbs  
Footprint: Ø 190 mm  
Weight: 33,1 kg / 73 lbs



### UR10e

Medium payload, versatile cobot

Reach: 1300 mm / 51.2 in  
Payload: 12,5 kg / 27.55 lbs  
Footprint: Ø 190 mm  
Weight: 33,5 kg / 73.9 lbs

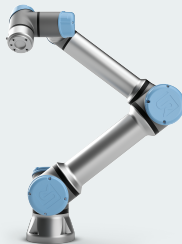


## Small Payload

### UR5e

Lightweight, versatile cobot

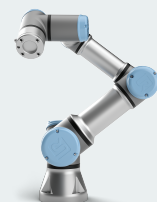
Reach: 850 mm / 33.5 in  
Payload: 5 kg / 11 lbs  
Footprint: Ø 149 mm  
Weight: 18,4 kg / 45.4 lbs



### UR3e

Lightweight, compact cobot

Reach: 500 mm / 19.7 in  
Payload: 3 kg / 6.6 lbs  
Footprint: Ø 128 mm  
Weight: 11,2 kg / 24.7 lbs



Automation Products  
and Solutions for Your  
Application.

### **AUTOMATED SOLUTIONS GROUP**

NEFF's Automated Solutions Group is a dedicated team of in-house electrical, pneumatic, and mechanical technicians and project designers that combines our products into complete solutions based on your unique application:

Robotic solutions, vision inspection, machine control, structural, pneumatics, and motion control

### Contact Us

 [neffautomation.com](http://neffautomation.com)